



# Review of June 2008 Adult Correctional Population Projections and Update on Recent Trends

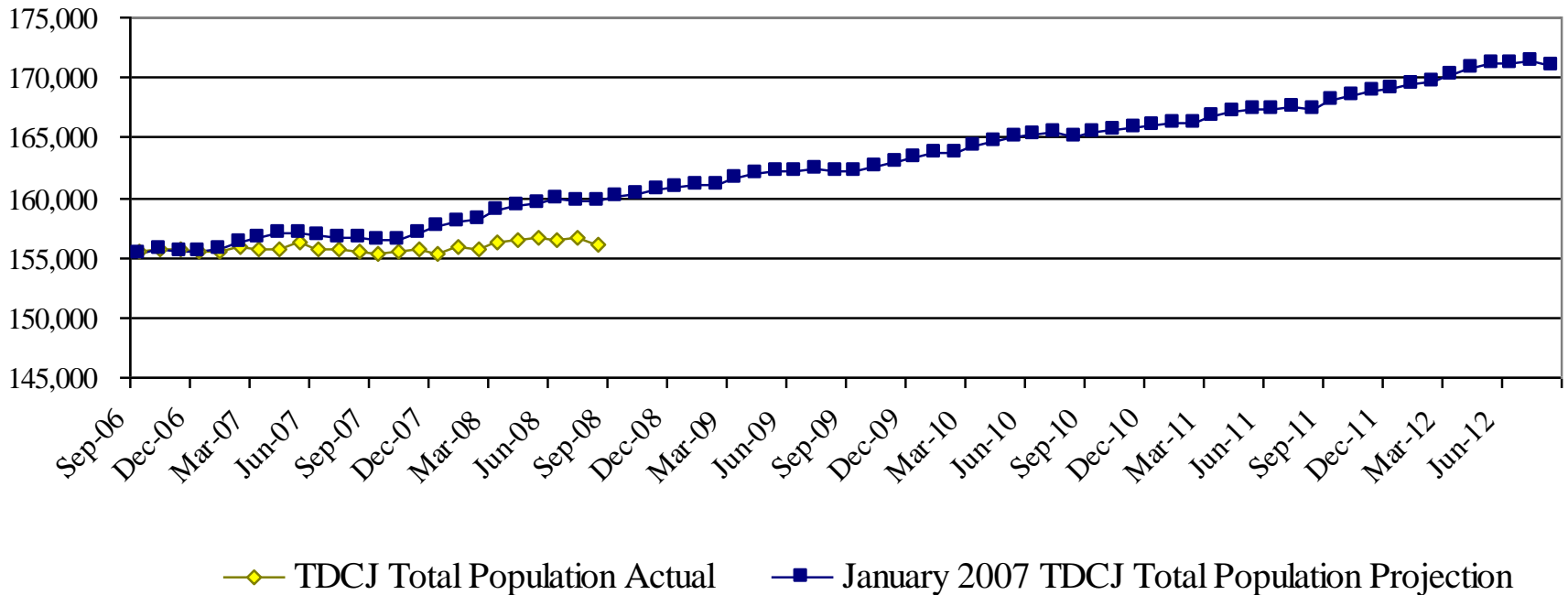
Prepared for the Joint Select Committee on the Operation and  
Management of the Texas Youth Commission and the Criminal  
Justice Legislative Oversight Committee

**October 1, 2008**

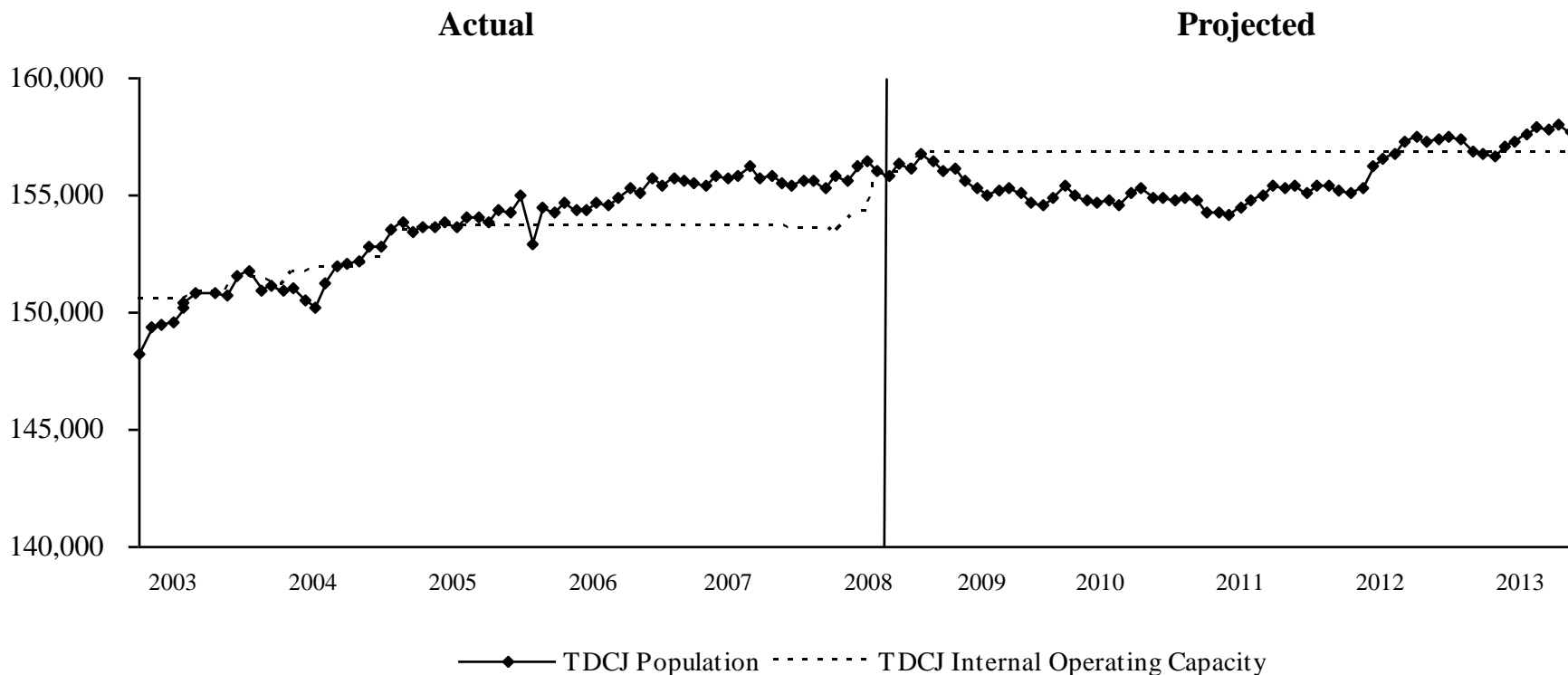
# Adult Incarceration Population Projected in 2007 to Grow by More Than 14,000 People Over a Five-Year Period



January 2007 Projection and Actual Population



# Actual and Projected TDCJ Inmate Population and Internal Operating Capacity, Fiscal Years 2003-2013



# Adult Incarceration Population Projections

## June 2008 Projections

### Fiscal Years 2008-2013



FISCAL YEAR	INCARCERATION POPULATION (END-OF-YEAR)	TDCJ STATE OPERATING CAPACITY <sup>1</sup>	PROJECTED POPULATION EXCEEDING OPERATING CAPACITY	
			NUMBER	PERCENT
2008	156,137	156,759	(622)	-0.4%
2009	154,618	156,759	(2,141)	-1.4%
2010	154,837	156,759	(1,922)	-1.2%
2011	155,149	156,759	(1,610)	-1.0%
2012	157,351	156,759	592	0.4%
2013	157,701	156,759	942	0.6%

<sup>1</sup>The state operating capacity preferred by TDCJ prison administrators is 97.5 percent of bed capacity. As of May 1, 2008, the state prison capacity was 158,217 beds and their internal operating capacity was 154,262. The state internal operating capacity will increase to 156,759 when the addition of DWI beds, the transfer of Texas Youth Commission beds, and the addition of Substance Abuse Felony Punishment Facility (SAFPF) beds is complete. The capacity additions are taking place during fiscal year 2008 and are expected to be complete in late fiscal year 2008 or early fiscal year 2009.

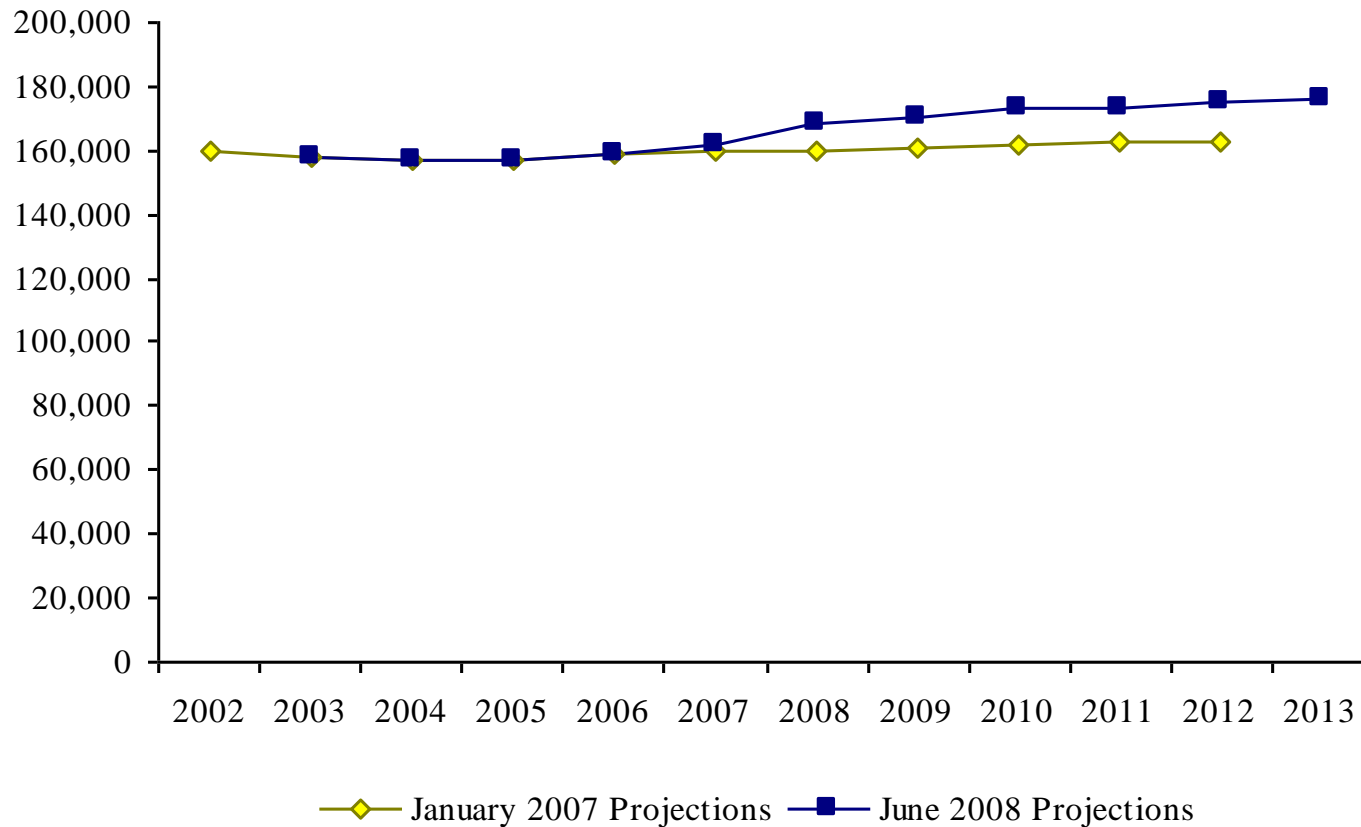
# Monitor Indicators of Future Shifts in Prison Population and Incorporate Changes in January 2009 Projection



- Court Activity Related to Direct Court Convictions;
- Arrests and Reported Crime in Texas;
- Felony Community Supervision Placements and Felony Community Supervision Population Growth;
- Parole Approval Votes and Rehabilitation Tier Votes and Time Spent in Rehabilitation Tier Programs;
- Releases from TDCJ; and
- Implementation of Diversion and Treatment Initiatives.

# Adult Felony Community Supervision Population

## January 2007 and June 2008 Projections



# Adult Felony Community Supervision Population

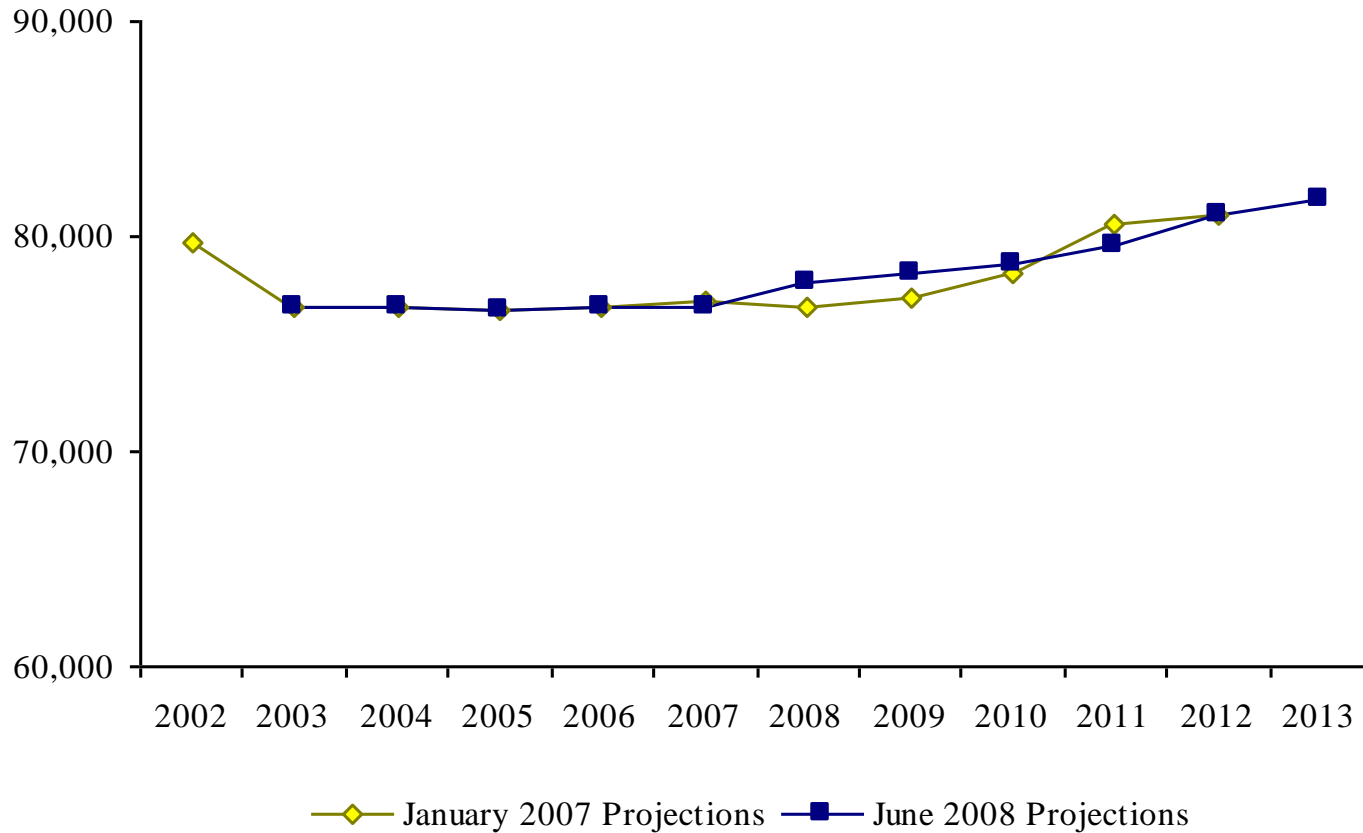
## June 2008 Projections

### Fiscal Years 2008-2013



<b>FISCAL YEAR</b>	<b>FELONY DIRECT COMMUNITY SUPERVISION POPULATION (END-OF-MONTH YEARLY AVERAGE)</b>
2008	168,532
2009	170,065
2010	172,737
2011	172,864
2012	175,070
2013	176,532

# Adult Parole Active Supervision Population January 2007 and June 2008 Projections





# Adult Parole Active Supervision Population

## June 2008 Projections

### Fiscal Years 2008-2013



<b>FISCAL YEAR</b>	<b>ACTIVE PAROLE SUPERVISION POPULATION (END-OF-MONTH YEARLY AVERAGE)</b>
2008	77,899
2009	78,267
2010	78,666
2011	79,502
2012	80,973
2013	81,650